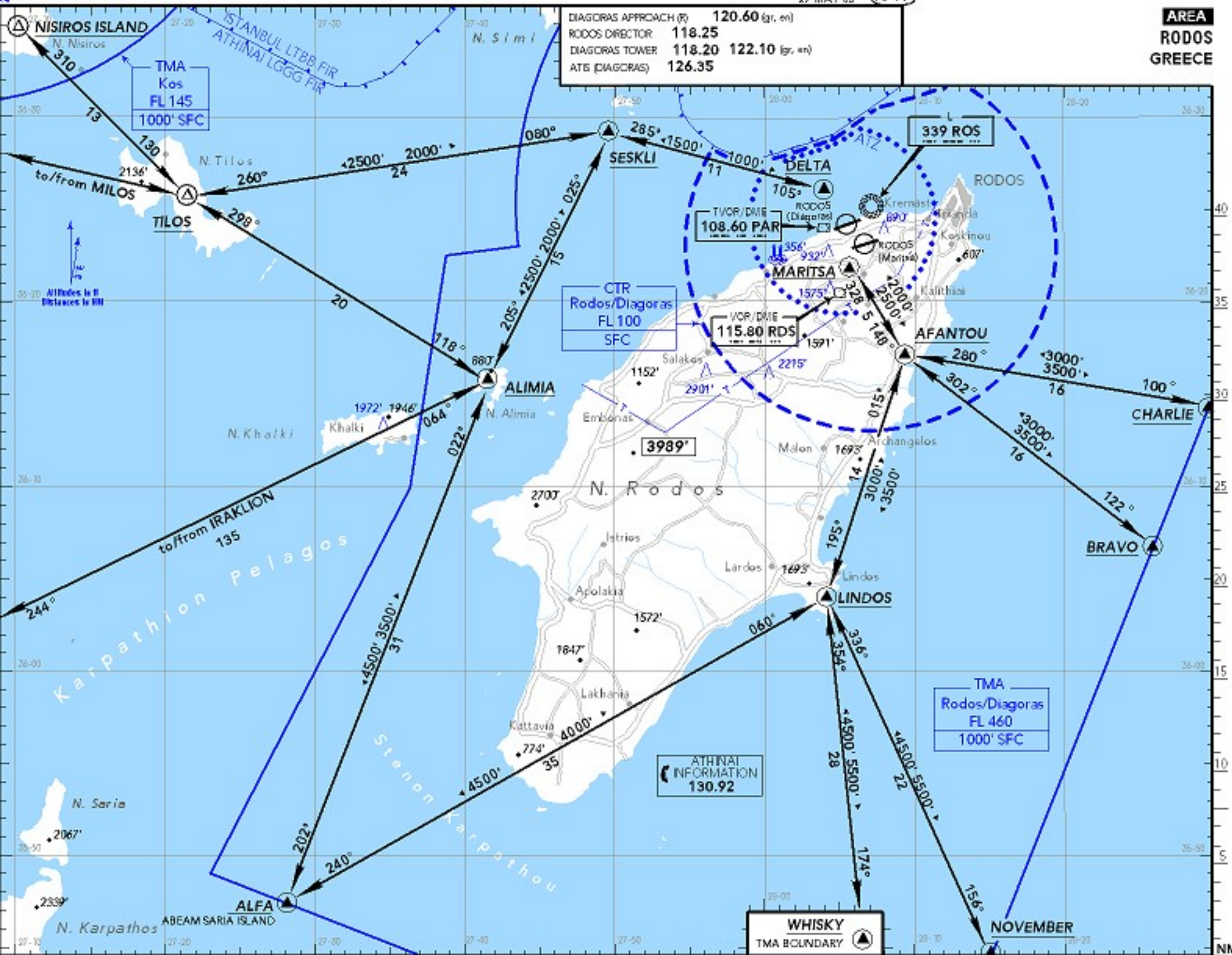


|                       |                        |
|-----------------------|------------------------|
| DIAGORAS APPROACH (R) | 120.60 (gr. en)        |
| RODOS DIRECTOR        | 118.25                 |
| DIAGORAS TOWER        | 118.20 122.10 (gr. en) |
| ATE (DIAGORAS)        | 126.35                 |



All ACFT (including HEL) flying VFR within Rodos/Diagoras TMA shall follow the VFR routes and altitudes as depicted on 10-1V unless VFR criteria require otherwise or a special authorization has been obtained from the appropriate ATC unit. According to traffic conditions ATC may assign different VFR routes.

When flying on the VFR routes Pilots must maintain a continuous listening watch to DIAGORAS APP or TWR and give position reports over the compulsory reporting points.

A deviation from the routes and/or altitudes requires a clearance from DIAGORAS APP prior entering Rodos/Diagoras TMA or immediately after departure.

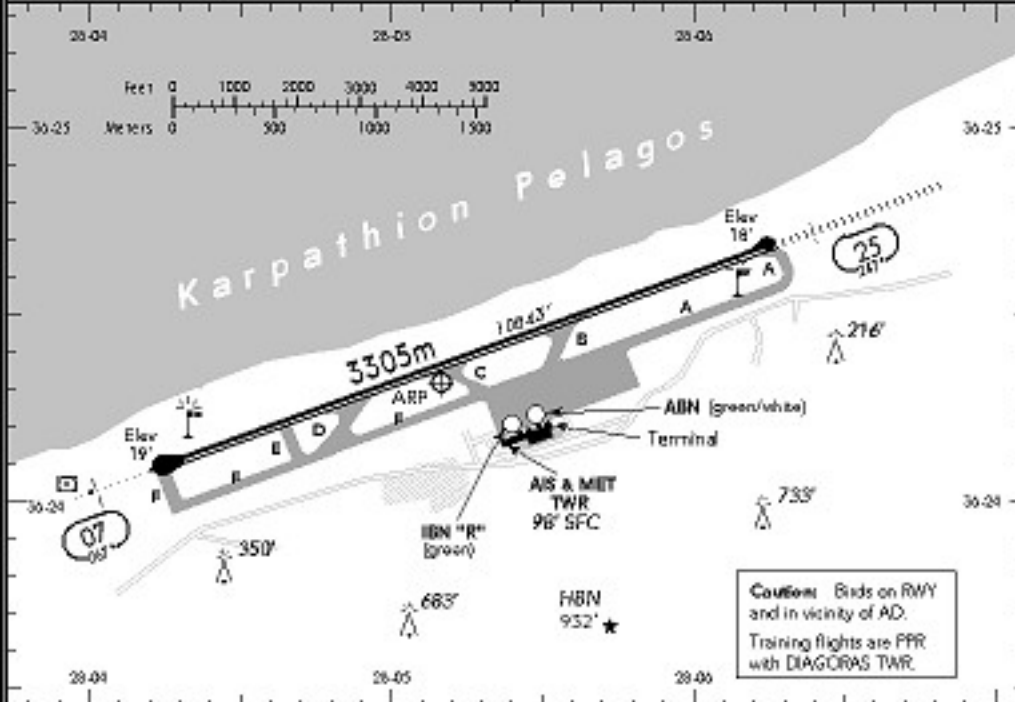
► The use of a functioning transponder, with 4096 codes capability on Mode A and automatic altitude transmission on Mode C, within Rodos/Diagoras TMA is mandatory for all flights.

**GREECE**



|        |        |
|--------|--------|
| ATIS   | 126.35 |
| GROUND | 121.70 |

|                     |        |
|---------------------|--------|
| F5)                 |        |
| ATHINAI INFORMATION | 130.92 |



**TAXI**

ABN - IBN - ALS - PAPI - THR - RL - TWYL - APRON - WDI - OBSTL

| RWY No | Dimension(m) - Surface | TORA(m) | LDA(m) | Strength       | Lights |
|--------|------------------------|---------|--------|----------------|--------|
| 07     | 3305 x 45 Asphalt      | 3305    | 3305   | PCN 73/F/B/X/U | OE     |
| 25     |                        |         |        |                |        |

See also RODOS 10-1W/10-1V. Do not mistake Rodos (Maritsa) AD (1.5 NM SE) for Rodos (Diagoras) AD. PROP ACFT enter traffic circuits at 1200'. RH traffic circuit RWY 25. Request start-up clearance when the ACFT doors are closed and when ready to start engines immediately. Overflying city of Rodos not permitted. To assist DIAGORAS TWR to arrange landing sequence of VFR arriving ACFT and facilitate the AD traffic, two visual holding patterns are established north and south of Diagoras AD. Holding on the above patterns should be carried out 2 NM North (DELTA), at 1000' or 2 NM South (MARITSA), at 2000', of RWY 07/25 or as instructed otherwise by DIAGORAS TWR.

**Extreme caution:**

- Moderate or severe turbulence and wind shear may be encountered in the final APCH and/or initial climb-out areas (mainly RWY 07). More specifically when S or SE winds of more than 10-15 KT prevail, the following phenomena are observed affecting seriously the flight safety:
  - The wind direction and speed at a given time vary along the runway (horizontal wind shear).
  - The wind direction and speed, at a given point of the runway, are continuously changing (turbulent wind shear).
  - Severe turbulence prevail in the final APCH, take-off and initial climb-out areas.
- When the S or SE wind speed increases over 15 KT, landing and/or take-off is not recommended since a severe horizontal and turbulent wind shear may prevail at some intermediate point of the final APCH and/or take-off and initial climb-out areas.
- Pilots are urged to volunteer reports of wind shear to DIAGORAS Tower or APCH controllers, so that the pilots of following ACFT can be warned. It is suggested that pilots should report it in the following format: a) A simple warning of the presence of the wind shear, even if no further information can be given. b) The altitude or altitude band, where the wind shear was encountered. c) Details of the effects of the wind shear on the ACFT, i.e. airspeed gain or loss, vertical speed tendency, etc.

(APP)  
DIAGORAS APPROACH (R) **120.60** (gr. en)

(TWR)  
DIAGORAS TOWER **118.20 122.10** (gr. en)  
  
GROUND **121.70**

**LGRP**  
Elev **19' / 6m**  
N36 24.3  
E028 05.2  
8.0 NM WSW City Harbour

|                   |                  |
|-------------------|------------------|
| ATE <b>126.35</b> |                  |
| RWY               | ILS              |
|                   |                  |
| RWY               | ILS              |
| 25                | 110.30 IRDS 248° |

|       |                |                |                |
|-------|----------------|----------------|----------------|
| 28-05 | ATZ            | CTR            | 28-09          |
|       | Rodos/Diagoras | Rodos/Diagoras | Rodos/Diagoras |
|       | 2000'          | FL 100         | FL 460         |
|       | SFC            | SFC            | 1000' SFC      |

